

STH 306 / STH 806 Remote Mount High Temperature T+RH Transmitters

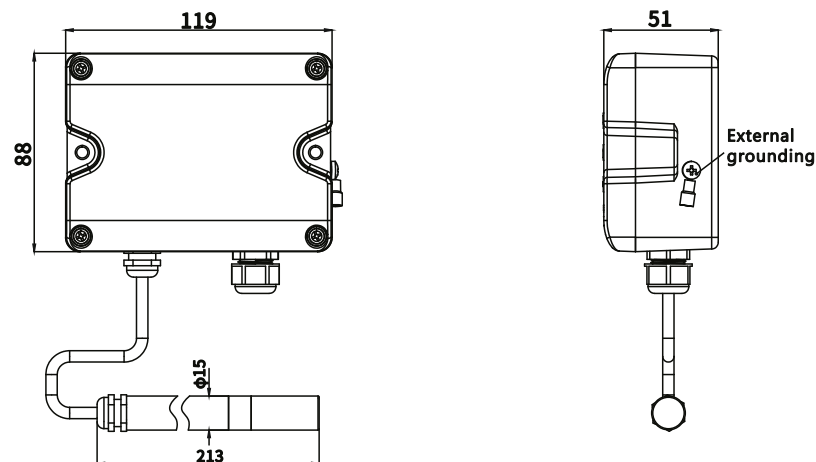
Installation Manual

PPI

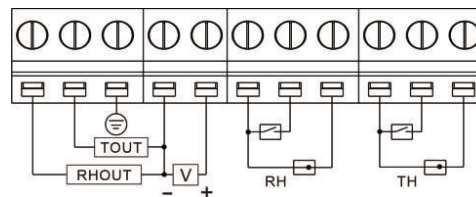
101, Diamond Industrial Estate, Navghar,
Vasai Road (E), Dist. Palghar - 401 210.
Sales : 8208199048 / 8208141446
Support : 07498799226 / 08767395333
E: sales@ppiindia.net, support@ppiindia.net

Aug 2025

► Dimensions (mm)



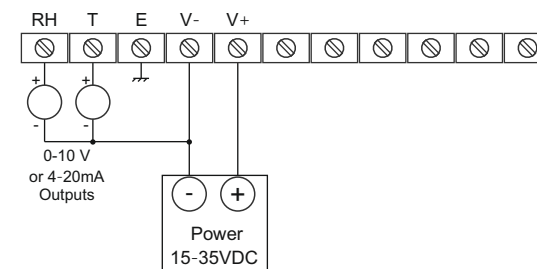
► Wiring Instructions



Wiring Diagram



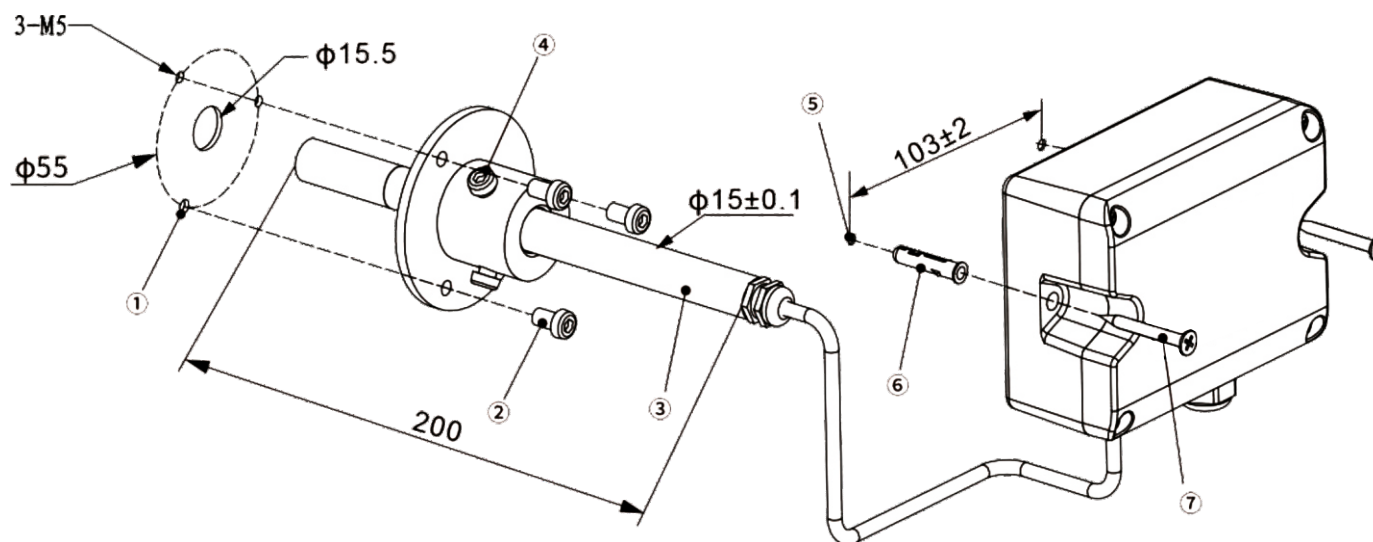
Illustrative Wiring Connections



Earthing Selection

1. Use internal terminal marked "E" for grounding.
2. Use the screw provided on the outside of shell.

► Installation & Mounting Holes



Probe

1. Drill holes for probe insertion and flange mounting.
2. Install the flange and lock the screws.
3. Insert the probe and adjust the insertion length.
4. Lock the screw for gripping the probe.

Shell

5. Drill holes for mounting the shell.
6. Insert the plastic expansion pipe into the drilled holes.
7. Install the shell and fix the mounting screws