

STH 302 Duct / Remote Mount High Temperature 'T+RH' Transmitters

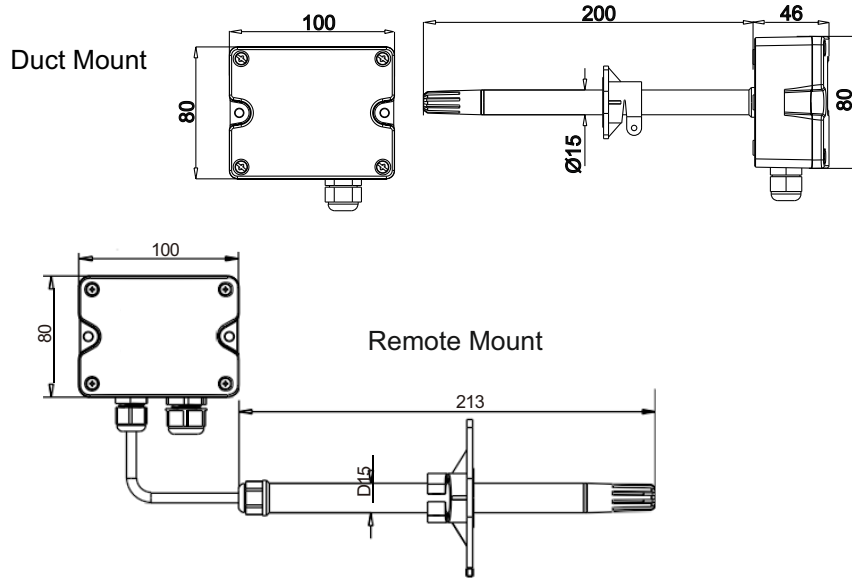
Installation Manual

PPI

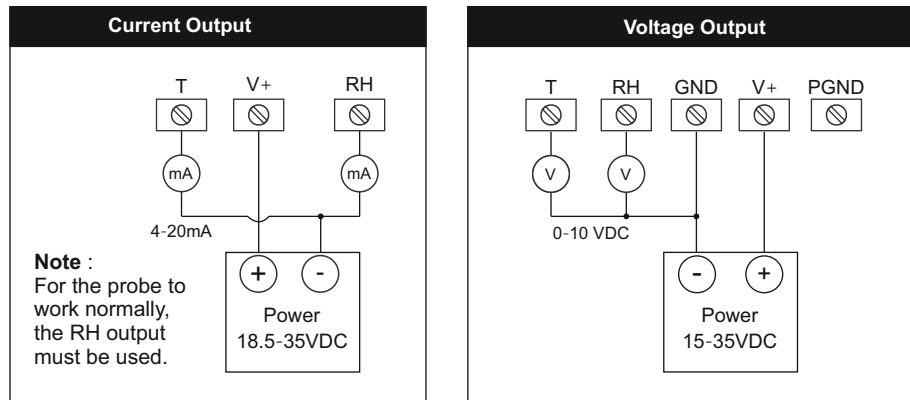
101, Diamond Industrial Estate, Navghar,
Vasai Road (E), Dist. Palghar - 401 210.
Sales : 8208199048 / 8208141446
Support : 07498799226 / 08767395333
E: sales@ppiindia.net, support@ppiindia.net

Sep 2025

► Dimensions (mm)



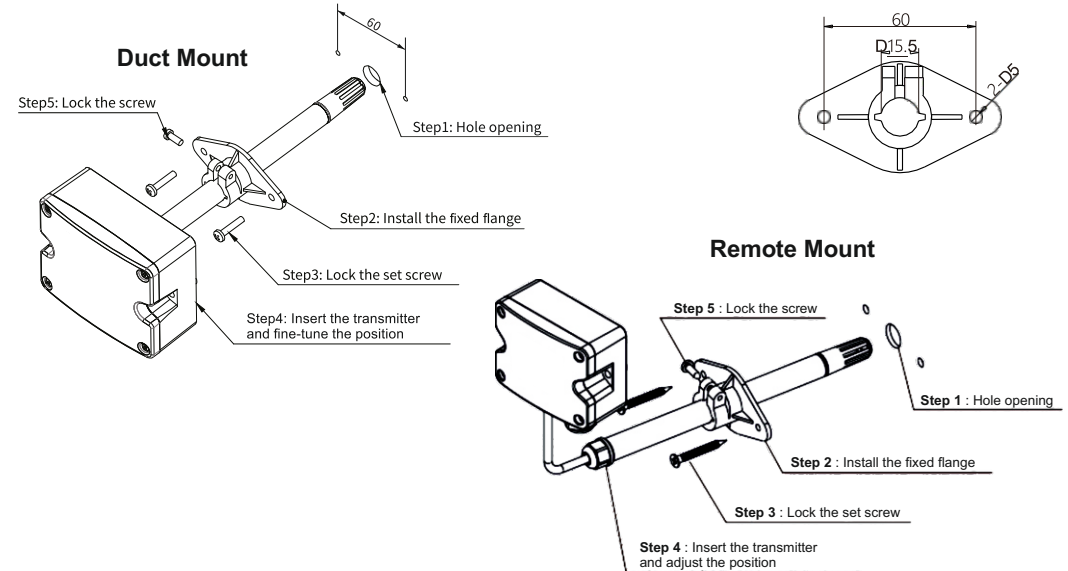
► Wiring Instructions



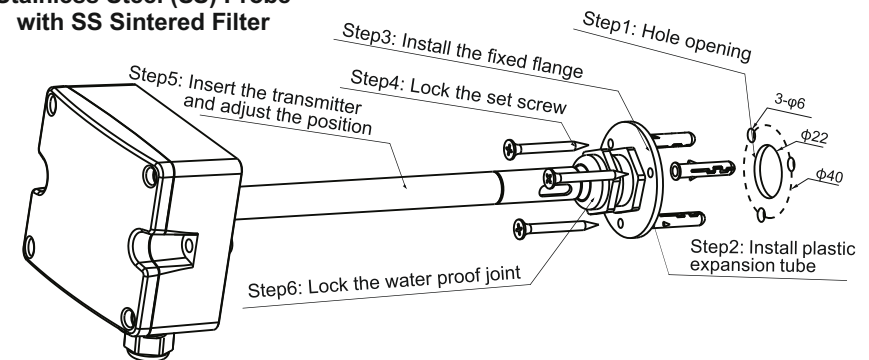
1. Open the top cover, connect the power cable and the signal wires to the bottom box through the waterproof cable gland.
2. Make connections as per the above figures and fix the top cover back to its original position.
3. Pay attention to the sealing between the waterproof cable gland and the bottom box (with a sealing ring), and the sealing between the upper cover and the bottom box (with a sealing ring), so that the overall protection level meets IP65.

► Installation & Mounting Holes

Polycarbonate (PC) Probe with Polymer Filter



Duct Mount Stainless Steel (SS) Probe with SS Sintered Filter



1. Duct Mount is recommended to be installed with flange accessories, and the insertion depth can be adjusted.
2. Fix the mounting flange on the air duct with two / three screws.
3. The screw on the flange can lock the inserted probe.
4. The opening of the air duct is $\phi 15.5\text{mm}$. After the probe is installed, the air duct should be sealed to avoid air leakage.