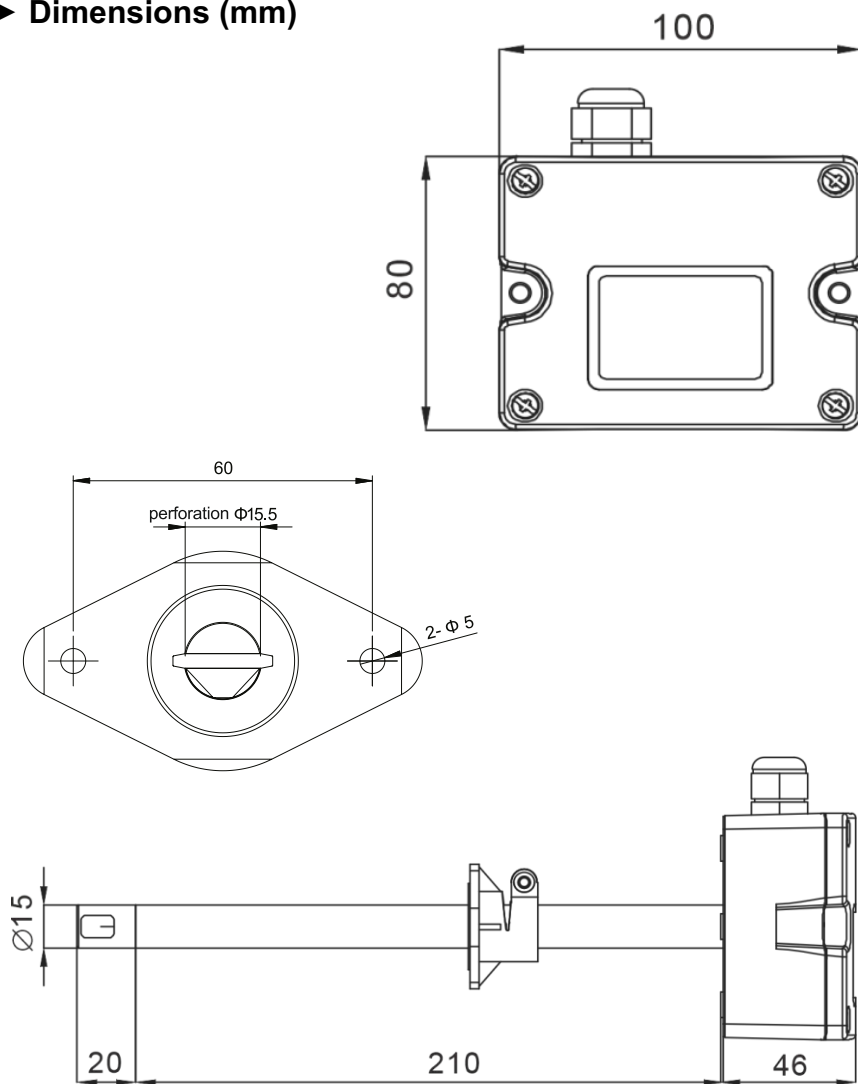
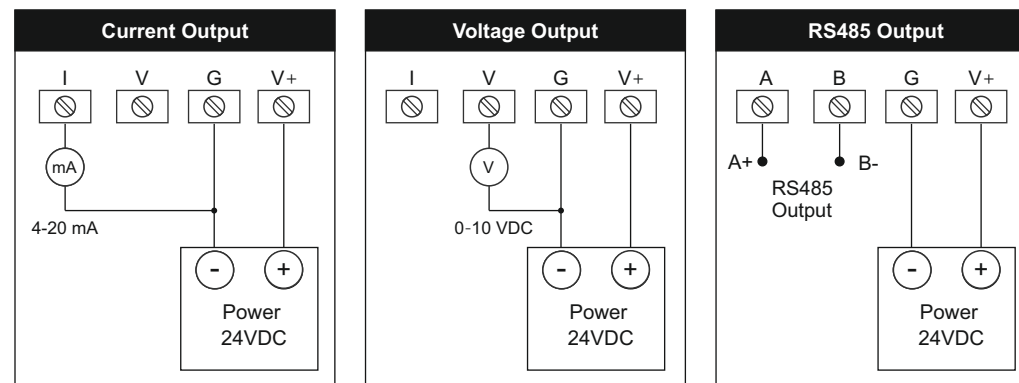


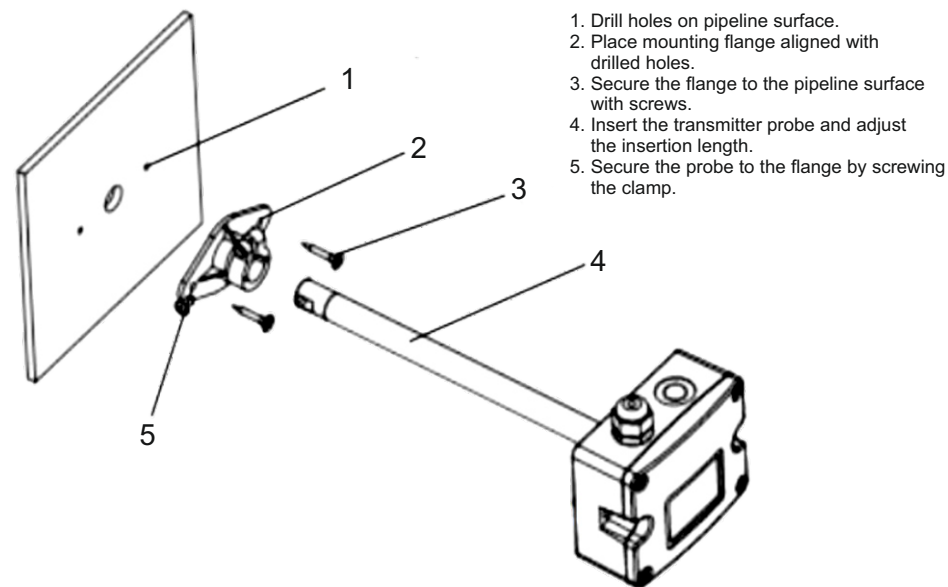
► Dimensions (mm)



► Wiring Instructions

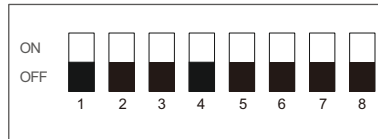


► Installation & Mounting Holes

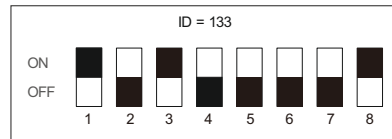
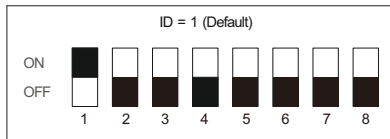


► RS485 Parameter Settings

Applicable for MODBUS RTU Version only. A set of eight DIP switches is provided for the manual setting of device ID.

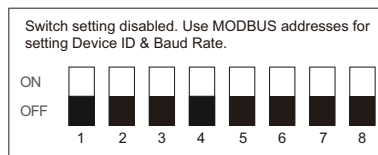


The switches 1 to 8 represent binary digits with switch-1 as LSB and switch-8 as MSB. The switch ON & OFF positions are treated as 1 & 0, respectively. The settable ID range is 1 to 255. The examples below show IDs set to 1 and 133.



Notes :

1. Power cycle the device for the changes to take effect.
2. The parity is fixed to None.
3. For setting the Device ID and the Baud Rate using MODBUS addresses, set all 8 DIP switches to OFF positions as shown below.



► MODBUS Register Addresses

Make sure that the 8 DIP switches are set to OFF positions.

Parameter	Address	R/W	Description	Default
Baud Rate	4	R/W	1 = 9600 bps, 2 = 19200 bps	9600 bps
Slave ID	5	R/W	1 to 255	1
Measured Air Velocity (32 Bit Float)	1	R	0.01 m/s Resolution. Example 0x414FD70A = 12.99 m/s The transmission byte sequence is D7 0A 41 4F	NA

PPI

101, Diamond Industrial Estate, Navghar,
Vasai Road (E), Dist. Palghar - 401 210.
Sales : 8208199048 / 8208141446
Support : 07498799226 / 08767395333
E: sales@ppiindia.net, support@ppiindia.net

Aug 2025