

Touch Panel Universal Process Data Logger

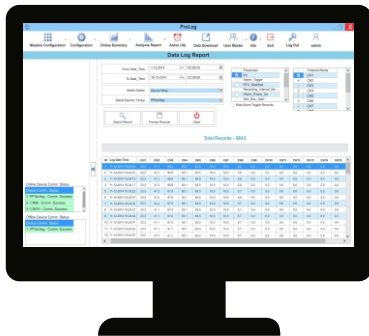
UniLog Ultra

8 to 48 Universal Channels
 7" Color Touch Screen
 21 CFR Part 11 Compliant PC Interface
 Built-in 30000 Record Storage Capacity

Process Precision Instruments
 Vasai Road (E), Dist. Palghar - 401210,
 Maharashtra, India

www.ppiindia.net

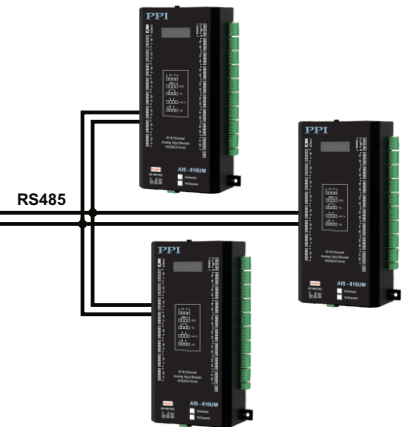
**21 CFR Compliant
 PC Software**



**7" Color Touch Screen
 30,000 Records Storage Capacity**



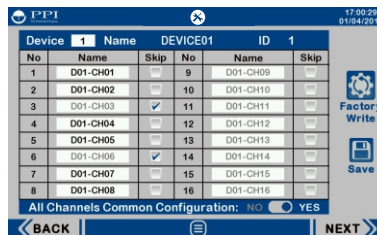
**8 to 48 Universal
 Process Channels**



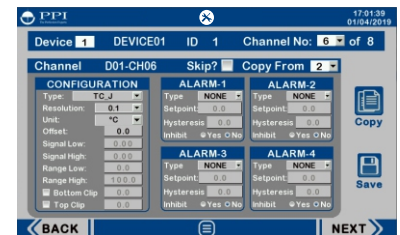
**Simultaneous Dual Online Graph View
 Up to 8 Channels Each**



**User Configurable Device
 & Channel Names**



**User Friendly
 Parameter Settings**



Salient Features

- Data Logging System Comprising Central 7" Touch Panel User Interface & One or More 8/16 Channel Process Interface Modules (Up to 48 Channels)
- Each Channel with Up to 4 Programmable Soft Alarms
- Configurable Device & Channel Names
- Configurable Dashboard for 8 / 16 / 24 / 48 Channel
- Simultaneous PV View with Color Change for Alarm Indication
- Single/Dual Online Graph View for Upto 8 Channels Each
- Universal Input Channels (Thermocouple / RTD / mV / V / mA)
- Large Data Storage Capacity : Appx. 30,000 Records
- Date / Time Stamped Recording of Process Values & Alarms
- Event Generated Records : Alarm Toggle, RTC Change, Recording Interval Change & Power-On
- Free 21 CFR Part 11 Compliant Software

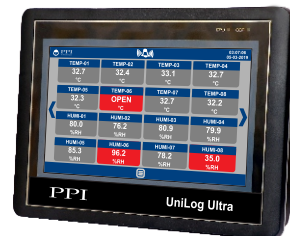
General Information

Product Type	Multi-Channel Universal Process Data Logger with Touch Panel & 21 CFR Part 11 Compliant PC Software
Quantity	1 Unit
Accessories	(Optional) 24 VDC @ 1.1A SMPS
Similar Products	ScanLog 96 ScanLog 4C ScanLog 8C ScanLog 16C UniLog Plus UniLog Pro Plus

Touch Panel Universal Process Data Logger

User Interface Display

Type	7" TFT Color Display with Touch Panel (16 : 9 Aspect Ratio, 24 Bits Color)
Viewing Area	152.4 X 91.5 mm
Resolution	800 X 480 pixels
Touch Type	Analog Resistive Film
Touch Life	Greater than 1 Million Operations
Physical	Mounting : Plug-in with Panel Mounting Clamps Overall Dimensions : 204 (W) X 145 (H) X 34 (D), mm Panel Cutout : 192 (W) X 138 (H), mm
Supply Voltage	24 VDC (Workable Range 9 VDC to 28 VDC) with Power Consumption Less Than 10 Watts



Analog Input Channel Module (Model : AIS - 816UM)

Number of Channels	8 or 16, Universal
Input Types	Thermocouples : J, K, T, R, S, B, N RTD : Pt100, 3-Wire DC mV : 0 to 80 mV DC Volts : 0 to 1.25V, 0 to 5V, 1 to 5V, 0 to 10V DC mA : 0-20 mA, 4-20 mA
Accuracy	Thermocouples Measurement : $\pm 0.25\%$ of Measured Value ± 1 LSC (Excluding CJC Error) Cold Junction : $\pm 2.5^\circ\text{C}$ (Specified over 18 to 37°C Ambient) RTD Pt100 $\pm 0.25\%$ of Measured Value ± 1 LSC (Lead-Resistance compensated up to 5 Ω in each Lead) DC mA / mV / V $\pm 0.20\%$ of Measured Value ± 1 LSC
Resolution (Settable)	Thermocouples & RTD : 0.1 / 1 ($^\circ\text{C}$) DC Linear Volts / Current : 0.001 / 0.01 / 0.1 / 1 (Counts)
Range	Thermocouple & RTD Pt100 : Refer Table-1 DC Volts / Current : Programmable within -30000 to +30000 Counts
Zero Offset	User Adjustable over Full Range for Each Channel
ADC	16 Bit ($\pm 32,768$ Counts), Sigma-Delta ($\Sigma\Delta$)
Channel Update Time	2 Second for 8 Channels 4 Second for 16 Channels
Input Impedance	Greater than 10 M Ω 249 Ω Precision Shunt Resistor for 0-20 mA & 4-20 mA Input
Signal Conditioning	First Order Low-Pass RC Filter. Cutoff Frequency at 55Hz (3dB at 55Hz with roll-off rate of 20dB/decade)
Input Protection	ESD : 8KV EFT : 2KV Surge : 1KV
Physical	Mounting : Wall Mounting Overall Dimensions : 115 (W) X 208 (L) X 52 (D), mm Terminals : Screw Type, Male-Female Detachable
Supply Voltage	85 to 265 VAC, 50/60 Hz, Single Phase



Touch Panel Universal Process Data Logger

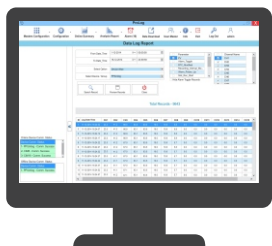
PC Interface

Device Serial Port	Port	: RS485, 2-wire, Half Duplex, Start-Stop Synchronized
	Slave ID	: 1 to 127
	Max. Units per Loop	: 31
	Max. Distance	: 1200 Meters

PC Software (USFDA 21 CFR Part 11 Compliant)

Supported Operating Systems (OS)	<ul style="list-style-type: none"> • Windows Vista • 32 bit / 64 bit Windows 8 & Above 	<ul style="list-style-type: none"> • Windows 7
Minimum PC Configuration Requirements	<ul style="list-style-type: none"> • 2.8 GHz Clock Speed • 32 bit / 64 bit Pentium Dual Core 	<ul style="list-style-type: none"> • 40 GB Hard Disk • 2 GB RAM

Features



- Supports Multiple Data Loggers on Single Installation
- Auto Start-up on PC Power-up
- Online Display of Process Values & Stored Records in Graphical & Tabular Forms with Alarm Indications
- SMS and/or Email Alerts on Alarm Conditions
- Process Value Min / Max Average Computation
- Automatic Periodic Downloading of Records Stored in Data Loggers
- Access Control According to Authority Level
- User Actions with Signing & Authorization
- Automatic Password Expiry
- Manual & Auto Back-up Facility with Archiving
- Data Log Reports with User Configurable Title, Footer & Header
- Data Log Report, Alarm Log Report, History Graph & Audit Trail Report in PDF & EXCEL formats
- Audit Trail History of Critical Events & User Actions

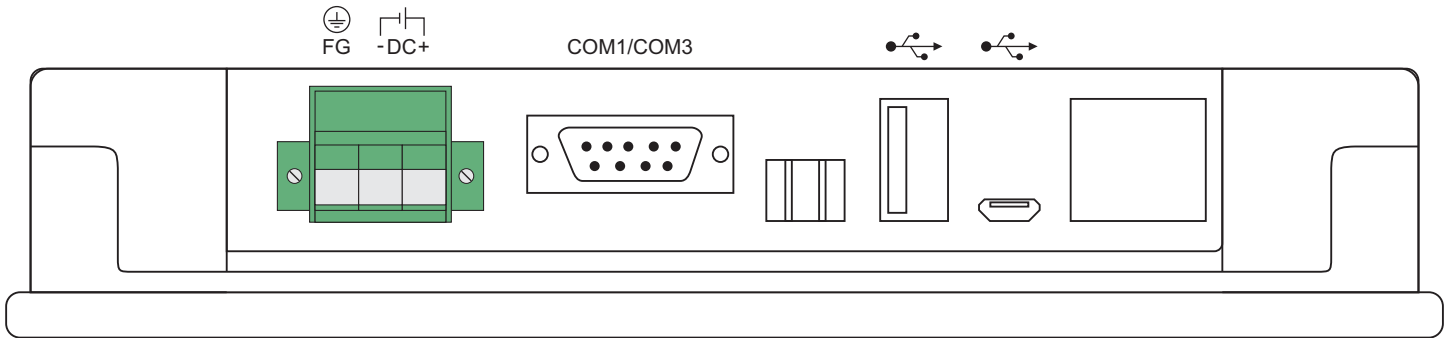
TABLE 1

Input Type	Range (Min. to Max.)
2 / 3-wire, RTD Pt100	-199.9 to +600.0 °C / -328.0 to +1112.0 °F
Type J Thermocouple (Fe-K)	0.0 to +960.0°C / +32.0 to +1760.0°F
Type K Thermocouple (Cr-Al)	-200.0 to +1376.0°C / -328.0 to +2508.0°F
Type T Thermocouple (Cu-Con)	-200.0 to +387.0°C / -328.0 to +728.0°F
Type R Thermocouple (Pt / Pt-Rh13%)	0.0 to +1771.0°C / +32.0 to +3219.0°F
Type S Thermocouple (Pt / Pt-Rh10%)	0.0 to +1768.0°C / +32.0 to +3214.0°F
Type B Thermocouple (Pt-Rh6% / Pt-Rh30%)	0.0 to +1826.0°C / +32.0 to +3218.0°F
Type N Thermocouple (NiCrSi / NiSi)	0.0 to +1314.0°C / +32.0 to +2397.0°F

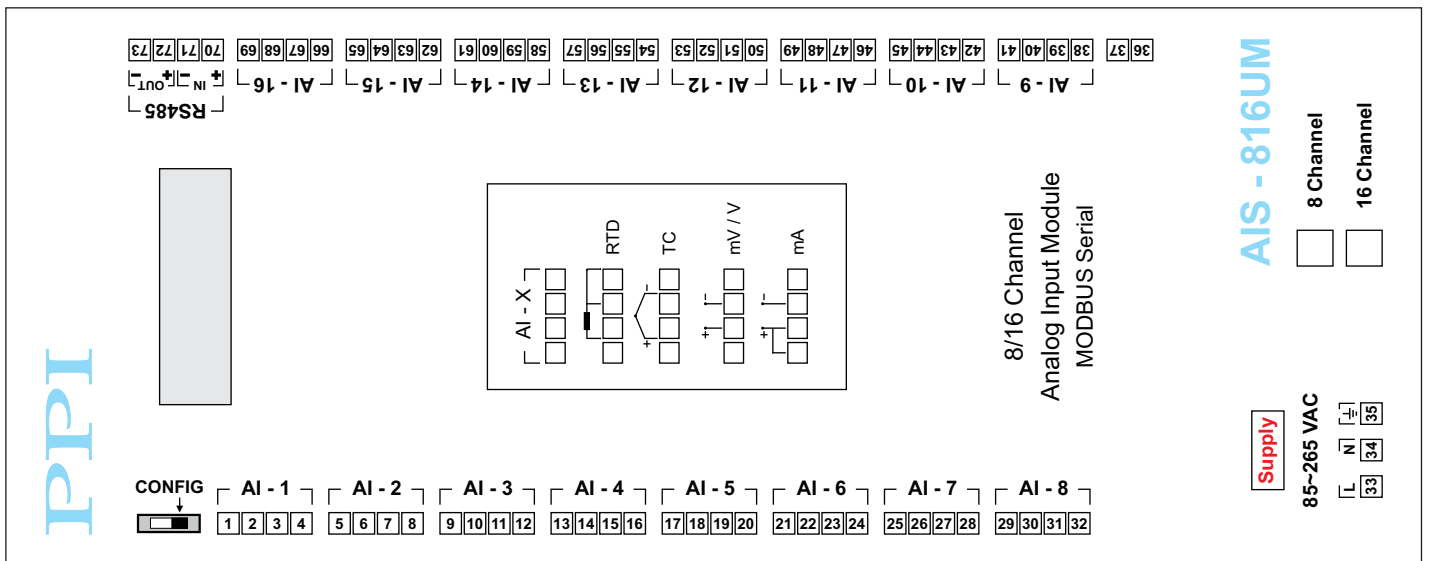
Touch Panel Universal Process Data Logger

Back Panel Termination

Display Interface Module



Channel Interface Module



Process Precision Instruments (An ISO 9001 : 2008 Company)

📍 101, Diamond Industrial Estate, Navghar, Vasai Road (E), Dist. Palghar - 401210, Maharashtra, India
 📞 Sales : 8208199048 / 8208141446 Support : 07498799226 / 08767395333
 ✉️ sales@ppiindia.net 🖱️ www.ppiindia.net