

Modular Universal Process Data Logger with PC Interface

UniLog Pro / UniLog Pro Plus

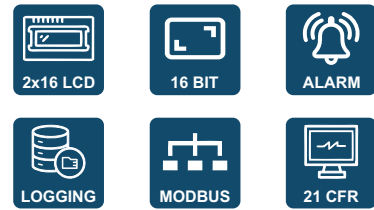
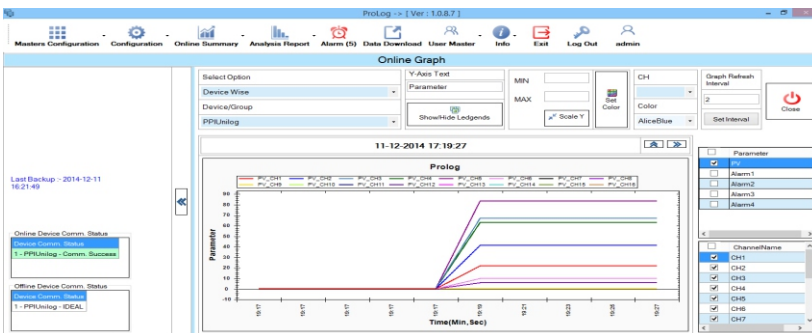
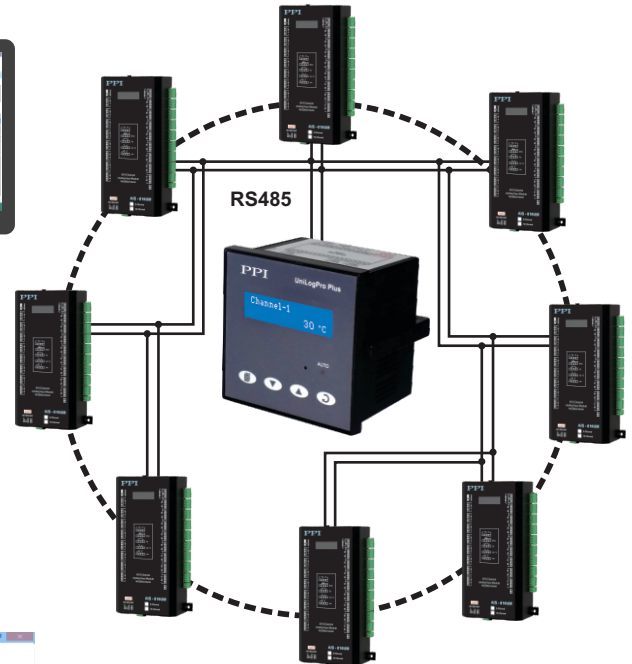
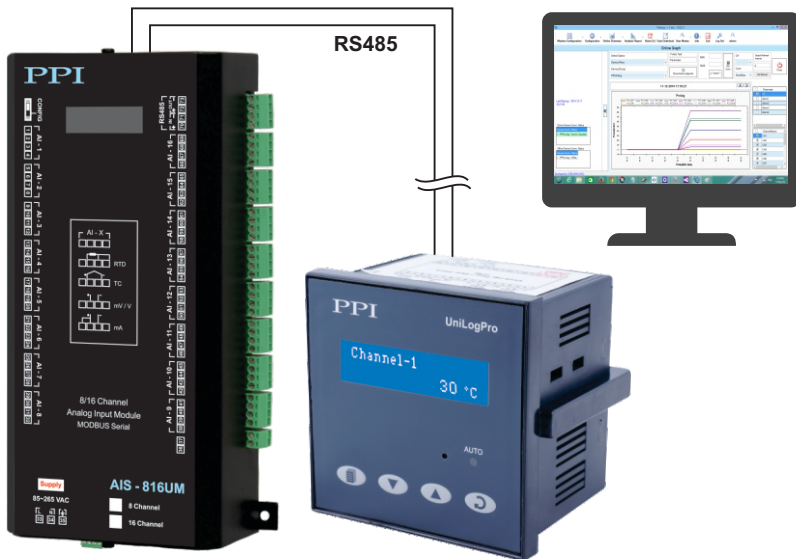
Fixed 8 / 16 Channels (UniLog Pro)
 Expandable 8 to 128 Universal Channels (UniLog Pro Plus)
 21 CFR Part 11 Compliant PC Interface
 Built-in Huge Record Storage Capacity

Process Precision Instruments
 Vasai Road (E), Dist. Palghar - 401210,
 Maharashtra, India

www.ppiindia.net

UniLog Pro : Fixed 8 / 16 Channels

UniLog Pro Plus : Expandable 8 to 128 Channels



Salient Features

- 2 Rows of 16 Characters LCD Display & 4 Tactile Keys
- Fixed 8 / 16 or Expandable 8 to 128 Universal Channels
- Universal Inputs : Thermocouples, RTD Pt100, mV, V, mA
- Fast Channel Update Rate : 250 mS per Channel
- 4 Programmable Soft Alarms per Channel
- 2 Common Relay Outputs for Alarms
- User Assigned Channel Names for Easy PV Identification
- Huge Data Storage Capacity : Appx. 38,56,000 Records
- Date / Time Stamped Process Value (PV) & Alarm Status Recording with Programmable Recording Interval
- Event Generated Records : Power-up, Alarm Toggle, RTC / Recording Interval Changed
- Continuous or Batch Recording
- Free 21 CFR Part 11 Compliant Software

General Information

Product Type	Fixed / Expandable, Modular Multi-Channel Universal Process Data Logger with 21 CFR Part 11 Complaint PC Software
Quantity	1 Unit
Accessories	(Optional) USB to RS485 Converter
Similar Products	ScanLog 96 ScanLog 4C ScanLog 8C ScanLog 16C UniLog Ultra UniLog Plus

Modular Universal Process Data Logger with PC Interface

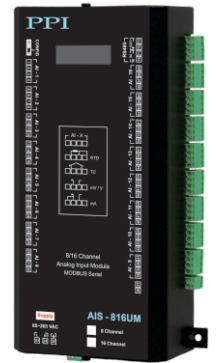
User Interface Display

Digital Readout	2 Rows of 16 Characters LCD Display with Back-Light LED
Keys	4 Tactile Switches (PAGE, DOWN, UP, ENTER)
Module Interface	Half Duplex RS485 Serial Port (Master)
PC Interface	Half Duplex RS485 Serial Port (Slave)
Alarm Outputs	1 Common High & 1 Common Low Alarm Relay (2A @ 230VAC)
Physical	Mounting : Plug-in with Panel Mounting Clamps Overall Dimensions : 96 (W) X 96 (H) X 65 (D), mm Panel Cutout : 92 (W) X 92 (H), mm
Supply Voltage	85~264 VAC, 50/60 Hz, Single Phase



Analog Input Channel Module (Model : AIS - 816UM)

Number of Channels	8 or 16, Universal
Input Types	Thermocouples : J, K, T, R, S, B, N RTD : Pt100, 3-Wire DC mV : 0 to 80 mV DC Volts : 0 to 1.25V, 0 to 5V, 1 to 5V, 0 to 10V DC mA : 0-20 mA, 4-20 mA
Accuracy	Thermocouples Measurement : $\pm 0.25\%$ of Measured Value ± 1 LSD (Excluding CJC Error) Cold Junction : $\pm 2.5^\circ\text{C}$ (Specified over 18 to 37°C Ambient) RTD Pt100 $\pm 0.25\%$ of Measured Value ± 1 LSD (Lead-Resistance compensated up to 5 Ω in each Lead) DC mA / mV / V $\pm 0.20\%$ of Measured Value ± 1 LSD
Resolution (Settable)	Thermocouples & RTD : 0.1 / 1 ($^\circ\text{C}$) DC Linear Volts / Current : 0.001 / 0.01 / 0.1 / 1 (Counts)
Range	Thermocouple & RTD Pt100 : Refer Table-1 DC Volts / Current : Programmable within -30000 to +30000 Counts
Zero Offset	User Adjustable over Full Range for Each Channel
ADC	16 Bit ($\pm 32,768$ Counts), Sigma-Delta ($\Sigma\Delta$)
Channel Update Time	2 Second for 8 Channels 4 Second for 16 Channels
Input Impedence	Greater than 10 M Ω 249 Ω Precision Shunt Resistor for 0-20 mA & 4-20 mA Input
Signal Conditioning	First Order Low-Pass RC Filter. Cutoff Frequency at 55Hz (3dB at 55Hz with roll-off rate of 20dB/decade)
Input Protection	ESD : 8KV EFT : 2KV Surge : 1KV
Physical	Mounting : Wall Mounting Overall Dimensions : 115 (W) X 208 (L) X 52 (D), mm Terminals : Screw Type, Male-Female Detachable
Supply Voltage	85 to 265 VAC, 50/60 Hz, Single Phase



Modular Universal Process Data Logger with PC Interface

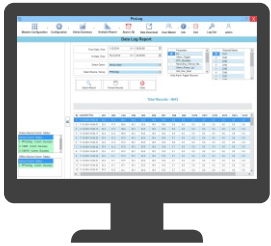
PC Interface

Serial Port (Slave)	Port	: RS485, 2-wire, Half Duplex, Start-Stop Synchronized
	Slave ID	: 1 to 127
	Max. Units per Loop	: 31
	Max. Distance	: 1200 Meters

PC Software (USFDA 21 CFR Part 11 Compliant)

Supported Operating Systems (OS)	<ul style="list-style-type: none"> • Windows Vista • 32 bit / 64 bit Windows 8 & Above 	<ul style="list-style-type: none"> • Windows 7
Minimum PC Configuration Requirements	<ul style="list-style-type: none"> • 2.8 GHz Clock Speed • 32 bit / 64 bit Pentium Dual Core 	<ul style="list-style-type: none"> • 40 GB Hard Disk • 2 GB RAM

Features



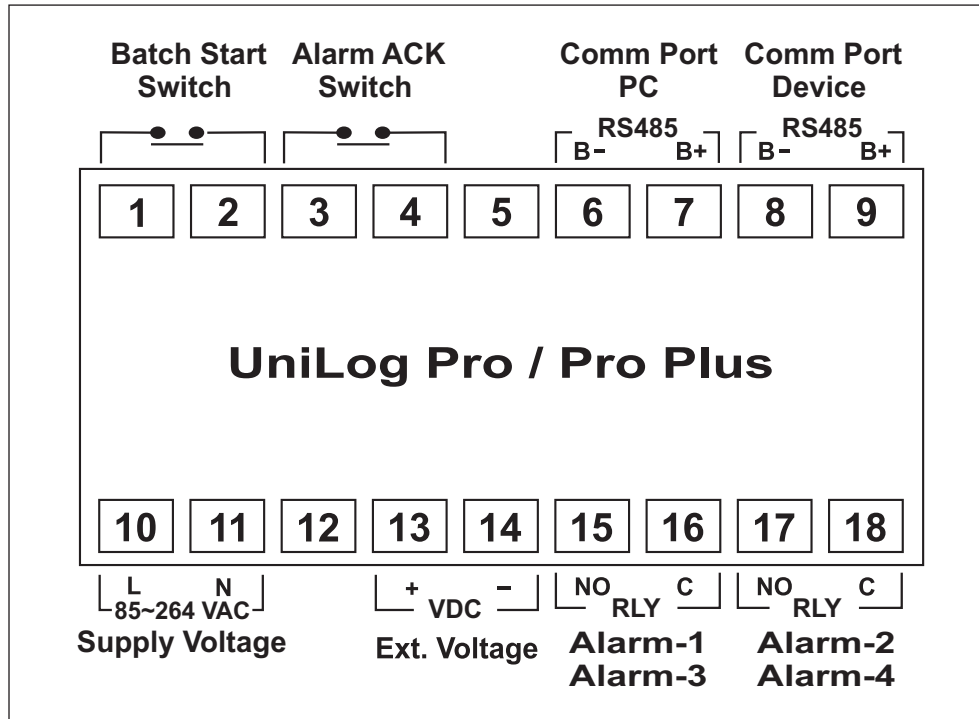
- Supports Multiple Data Loggers on Single Installation
- Auto Start-up on PC Power-up
- Online Display of Process Values & Stored Records in Graphical & Tabular Forms with Alarm Indications
- SMS and/or Email Alerts on Alarm Conditions
- Process Value Min / Max Average Computation
- Automatic Periodic Downloading of Records Stored in Data Loggers
- Access Control According to Authority Level
- User Actions with Signing & Authorization
- Automatic Password Expiry
- Manual & Auto Back-up Facility with Archiving
- Data Log Reports with User Configurable Title, Footer & Header
- Data Log Report, Alarm Log Report, History Graph & Audit Trail Report in PDF & EXCEL formats
- Audit Trail History of Critical Events & User Actions

TABLE 1

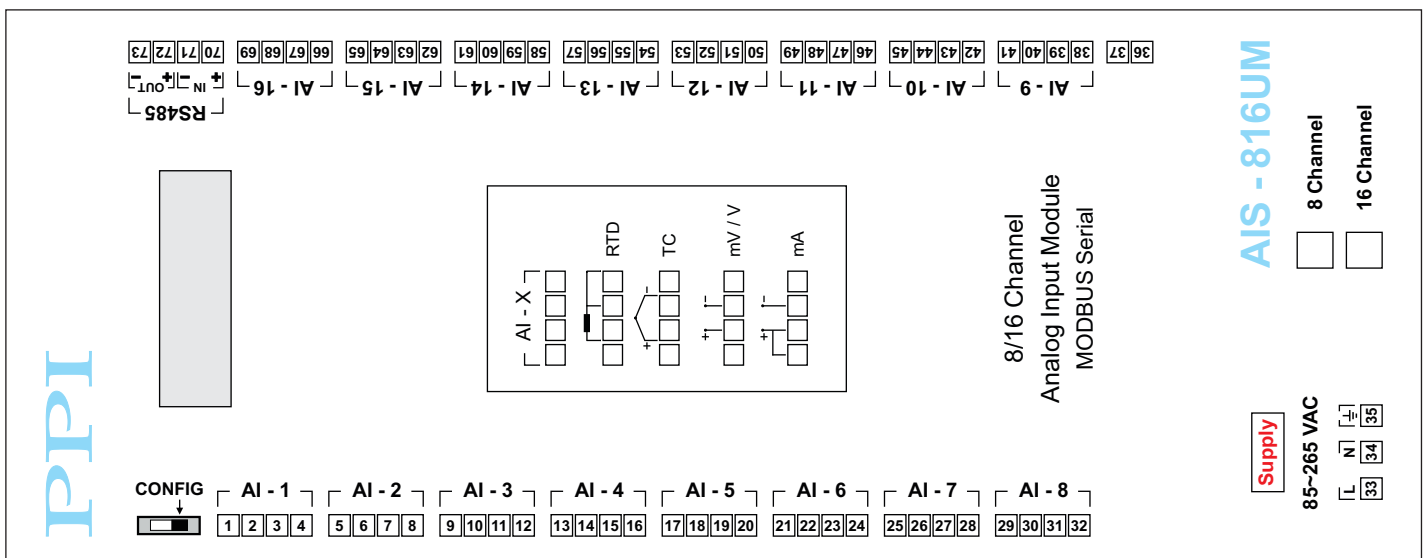
Input Type	Range (Min. to Max.)
2 / 3-wire, RTD Pt100	-199.9 to +600.0 °C / -328.0 to +1112.0 °F
Type J Thermocouple (Fe-K)	0.0 to +960.0°C / +32.0 to +1760.0°F
Type K Thermocouple (Cr-Al)	-200.0 to +1376.0°C / -328.0 to +2508.0°F
Type T Thermocouple (Cu-Con)	-200.0 to +387.0°C / -328.0 to +728.0°F
Type R Thermocouple (Pt / Pt-Rh13%)	0.0 to +1771.0°C / +32.0 to +3219.0°F
Type S Thermocouple (Pt / Pt-Rh10%)	0.0 to +1768.0°C / +32.0 to +3214.0°F
Type B Thermocouple (Pt-Rh6% / Pt-Rh30%)	0.0 to +1826.0°C / +32.0 to +3218.0°F
Type N Thermocouple (NiCrSi / NiSi)	0.0 to +1314.0°C / +32.0 to +2397.0°F

Back Panel Termination

User Interface Module



Channel Interface Module



Process Precision Instruments (An ISO 9001 : 2008 Company)

101, Diamond Industrial Estate, Navghar, Vasai Road (E), Dist. Palghar - 401210, Maharashtra, India
 Sales : 8208199048 / 8208141446 Support : 07498799226 / 08767395333
 sales@ppiindia.net www.ppiindia.net