

# Digital Output Module

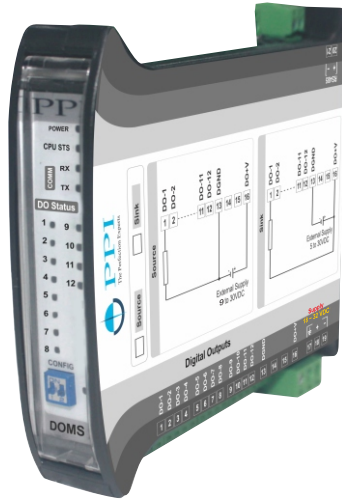
## DOMS-12

12 Channels  
DIN-Rail Mount  
MODBUS over Serial

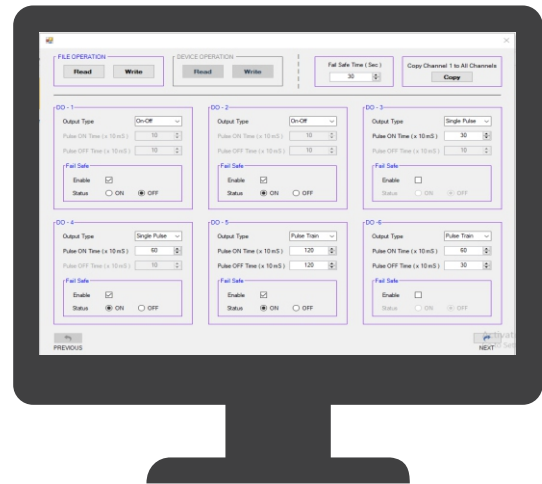
**Process Precision Instruments**  
Vasai Road (E), Dist. Palghar - 401210,  
Maharashtra, India

www.ppiindia.net

DOMS-12



Configuration Tool



### Salient Features

- 12 Digital Output Channels
- **Sink Output Version :**  
Open Drain : 5 to 30 V, 200 mA max.
- **Source Output Version :**  
VCC : 9 to 30VDC, 75mA per Channel
- Supports Discrete Coil (Bits) & Input Register (Bit-Mapped) Modbus Data Type for Status Reading
- 3 Digital Output Function Modes
  - On-Off
  - Re-Triggerable Single Pulse with Programmable Pulse-ON Time
  - Continuous Pulse Train with Programmable Pulse-ON & Pulse-OFF Time
- Programmable Fail-Safe Output States Against Communication Link Failure
- 2-wire, Half-Duplex, Start-Stop Synchronized, isolated RS485 Serial Port with Industry Standard Modbus RTU Protocol
- Programmable Slave ID, Baud Rate & Parity
- Compact DIN-Rail Mount Enclosure : 22.5(W) X 101(H) X 119(D), mm
- Wide Supply Voltage Range : 18 ~ 32 VDC (24 VDC Nominal)

### General Information

<b>Product Type</b>	12 Channel DIN-Rail Digital Output Module MODBUS over RS485 Serial Interface
<b>Ordering Code</b>	DOMS-12 Sink, DO with connection type sink DOMS-12 Source, DO with connection type Source
<b>Quantity</b>	1 Unit
<b>Accessories</b>	(Optional) USB to RS485 Converter
<b>Similar Modules</b>	AIMS-4X, AIMS-8X AOMS-4U, AOMS-8U DIMS-8, DIMS-16

# Digital Output Module

## Channel Specifications

Number of Channels	12
Output Types	<ul style="list-style-type: none"> <li>• <b>Sink Output Type</b> : Open Drain, 5 to 30 V, 200 mA max.</li> <li>• <b>Source Output Type</b> : VCC 9 to 30 VDC, 75 mA per Channel</li> </ul>
Output Function Modes	<ul style="list-style-type: none"> <li>• On-Off</li> <li>• Re-Triggerable Single Pulse with Programmable Pulse-ON Time (0.01 to 300 Seconds)</li> <li>• Continuous Pulse Train with Programmable Pulse-ON &amp; Pulse-OFF Time (0.01 to 300 Seconds)</li> </ul>
Fail-Safe Mode	The Outputs switch to programmed ON or OFF state upon Communication link failure for more than programmed time period (1 to 300 Seconds)
Isolation	Three-way Isolation Eliminates Potential Ground Loops between Power, Outputs & RS485 Serial Port 1500VAC for 1 second or 250VAC continuous

## Serial Communication

Port	RS485, 2-wire, Half Duplex, Start-Stop Synchronized
Protocol	MODBUS RTU
Baud Rate	Settable : 2400, 4800, 9600, 19200, 38400
Parity	Settable : None, Even, Odd
Max. Units per Loop	31
Max. Distance	1200 Meters

## Power Supply

Type	Switch Mode (SMPS)
Power Requirement	18 ~ 32 VDC, nominal 24 VDC @ <b>300mA Max.</b> <b>Note</b> : In case of looping multiple modules on one power source, make sure that the power source is capable of supplying minimum 300mA current per module.
Consumption	7 VA Max @ 24 VDC

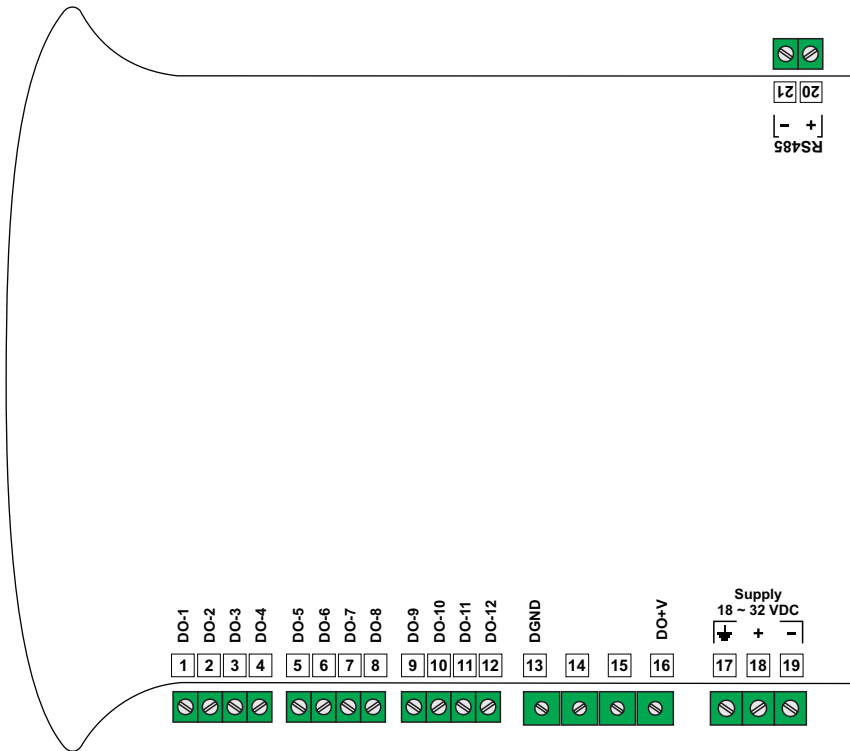
## Physical

Mounting	DIN-Rail
Overall Dimensions	22.5(W) X 101(H) X 119(D), mm
Terminals	Screw Type, Pluggable
Weight	400 gm, Appx.

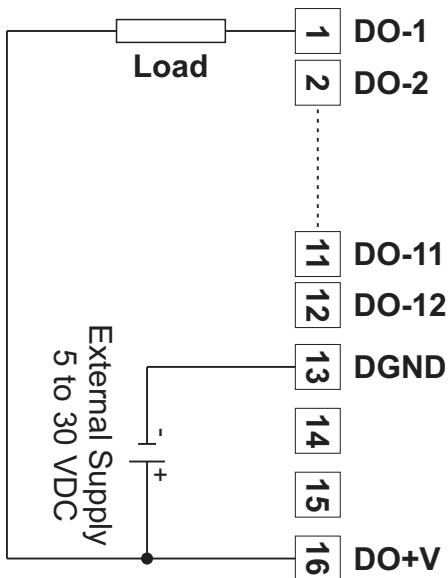
## Environmental

Operating Ambient	0 to 55°C & 5 to 90%RH Non-condensing
Storage Temperature	-10 to +70°C
Atmospheres	Not Suitable for use in Corrosive or Explosive Atmospheres. The Panel in which the Instrument is Mounted must be free of Electrically Conductive Pollution.

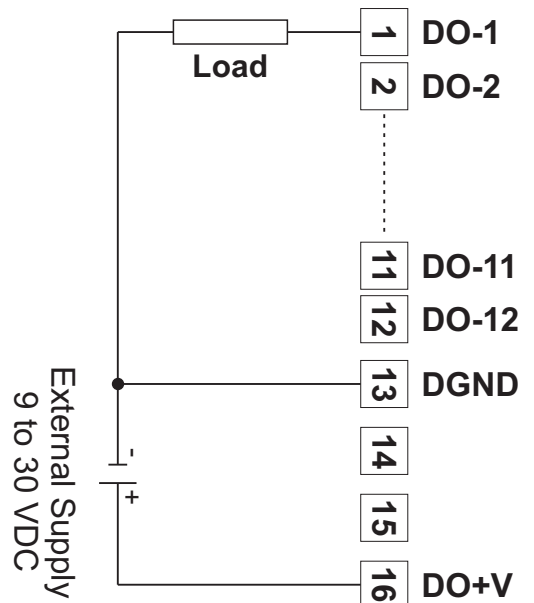
## Terminations & Electrical Connections







### Sink



### Source



### Process Precision Instruments (An ISO 9001 : 2008 Company)

 101, Diamond Industrial Estate, Navghar, Vasai Road (E), Dist. Palghar - 401210, Maharashtra, India  
 Sales : 8208199048 / 8208141446 Support : 07498799226 / 08767395333  
 sales@ppiindia.net  www.ppiindia.net