

Analog Output Module

AOMS-4U / AOMS-8U

4 / 8 Channels
 DIN-Rail Mount
 MODBUS over Serial

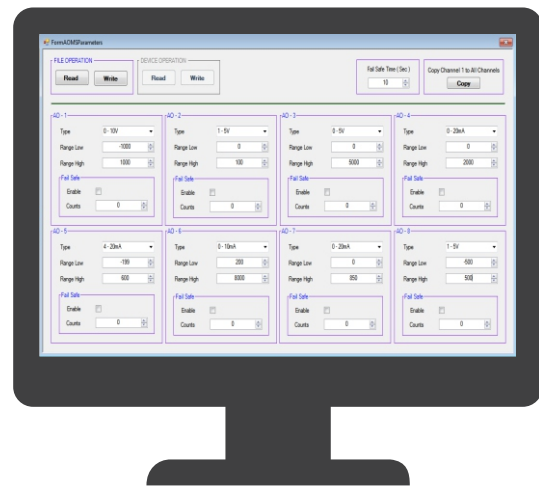
Process Precision Instruments
 Vasai Road (E), Dist. Palghar - 401210,
 Maharashtra, India

www.ppiindia.net

AOMS-8U

AOMS-4U

Configuration Tool



Salient Features

- 4 (AOMS-4U) or 8 (AOMS-8U) Analog Output Channels
- Each Channel Independently Programmable for DC Current (0-20 mA, 4-20 mA & 0-10 mA) or Voltage (0-5 V, 1-5 V & 0-10 V) Output
- 14 Bit Output Signal Resolution
- Programmable Min / Max Counts Corresponding to Signal Low & Signal High Outputs
- Programmable Fail-Safe Output Signal Level Against Communication Link Failure
- Three-way Isolation Eliminates Potential Ground Loops between Power, Outputs and RS485 Serial Port
- Supports Coils (Bits) & Bit-Mapped Registers MODBUS Data Type for Most Parameters
- 2-wire, Half-Duplex, Start-Stop Synchronized RS485 Serial Port
- Industry Standard MODBUS RTU Protocol with Programmable ID, Baud Rate & Parity
- Compact DIN-Rail Mount Enclosure : 22.5(W) X 101(H) X 119(D), mm
- Wide Supply Voltage Range : 18 ~ 32 VDC (24 VDC Nominal)
- Free PC Tool for Easy Configuration and Parameter Settings

General Information

Product Type	4 / 8 Channel DIN-Rail Analog Output Module MODBUS over RS485 Serial Interface
Ordering Code	AOMS-4U, 4 Channel Module AOMS-8U, 8 Channel Module
Quantity	1 Unit
Accessories	(Optional) USB to RS485 Converter
Similar Modules	AIMS-4X, AIMS-8X DIMS-8, DIMS-16 DOMS-12

Analog Output Module

Channel Specifications

Number of Channels	4 / 8
Output Types (Programmable)	DC mA : 0-20 mA, 4-20 mA, 0-10 mA DC Volts : 0 to 5V, 1 to 5V, 0 to 10V
Accuracy	Better than $\pm 0.1\%$ of Span
Resolution	Better than 14 Bit
Response Time (Step Change)	150 mS typical for output signal to reach 98% of final value (Actual response time will change with load type / value)
Output Burden	Current : 0-600 Ω typical Voltage : 1 K Ω Minimum
Isolation	Three-way Isolation Eliminates Potential Ground Loops between Power, Outputs & RS485 Serial Port 1500VAC for 1 second or 250VAC continuous
Scaling (User Programmable)	Programmable Minimum & Maximum Counts (-30,000 to +30,000) Corresponding to Signal Low & Signal High Outputs
Fail-Safe Mode	The Outputs hold programmed Signal Level upon Communication link failure for more than programmed time period (1 to 300 Sec.)

Serial Communication

Port	RS485, 2-wire, Half Duplex, Start-Stop Synchronized
Protocol	MODBUS RTU
Baud Rate	Settable : 2400, 4800, 9600, 19200, 38400
Parity	Settable : None, Even, Odd
Max. Units per Loop	31
Max. Distance	1200 Meters

Power Supply

Type	Switch Mode (SMPS)
Power Requirement	18 ~ 32 VDC, nominal 24 VDC @ 300mA Max. Note : In case of looping multiple modules on one power source, make sure that the power source is capable of supplying minimum 300mA current per module.
Consumption	7 VA Max @ 24 VDC

Physical

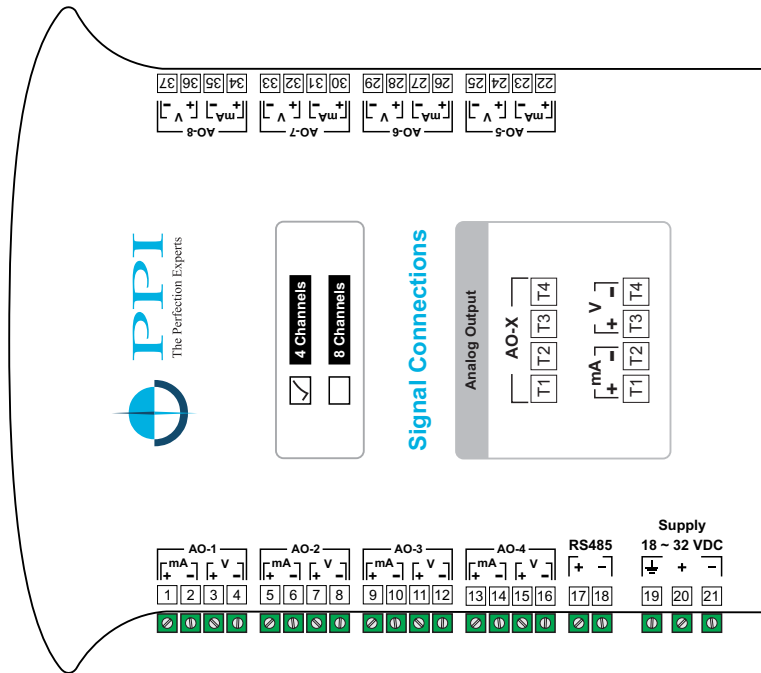
Mounting	DIN-Rail
Overall Dimensions	22.5(W) X 101(H) X 119(D), mm
Terminals	Screw Type, Pluggable
Weight	400 gm, Appx.

Environmental

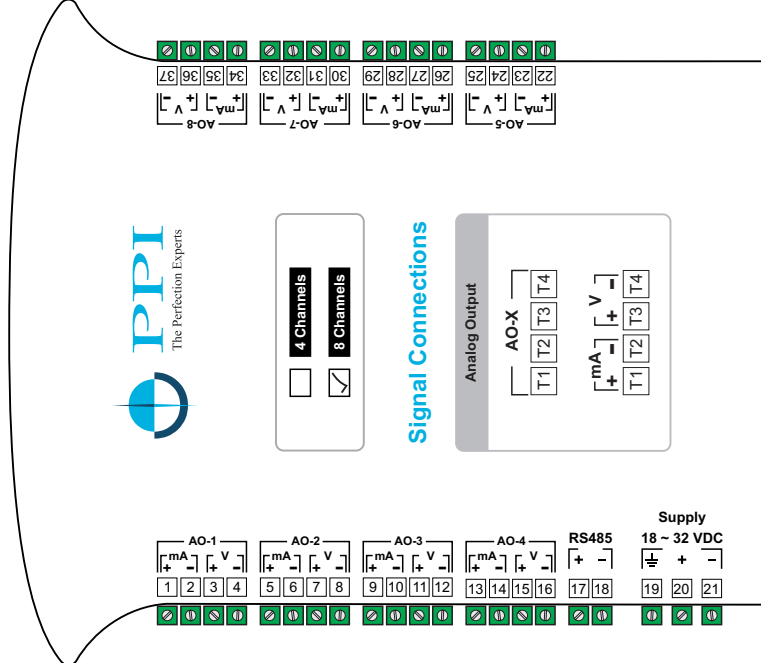
Operating Ambient	0 to 55°C & 5 to 90%RH Non-condensing
Storage Temperature	-10 to +70°C
Atmospheres	Not Suitable for use in Corrosive or Explosive Atmospheres. The Panel in which the Instrument is Mounted must be free of Electrically Conductive Pollution.

Terminations

4 Channel Module



8 Channel Module



Process Precision Instruments (An ISO 9001 : 2008 Company)

📍 101, Diamond Industrial Estate, Navghar, Vasai Road (E), Dist. Palghar - 401210, Maharashtra, India

☎ Sales : 8208199048 / 8208141446 Support : 07498799226 / 08767395333

✉ sales@ppiindia.net 🖱 www.ppiindia.net