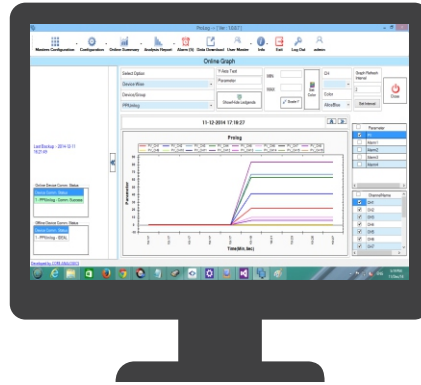
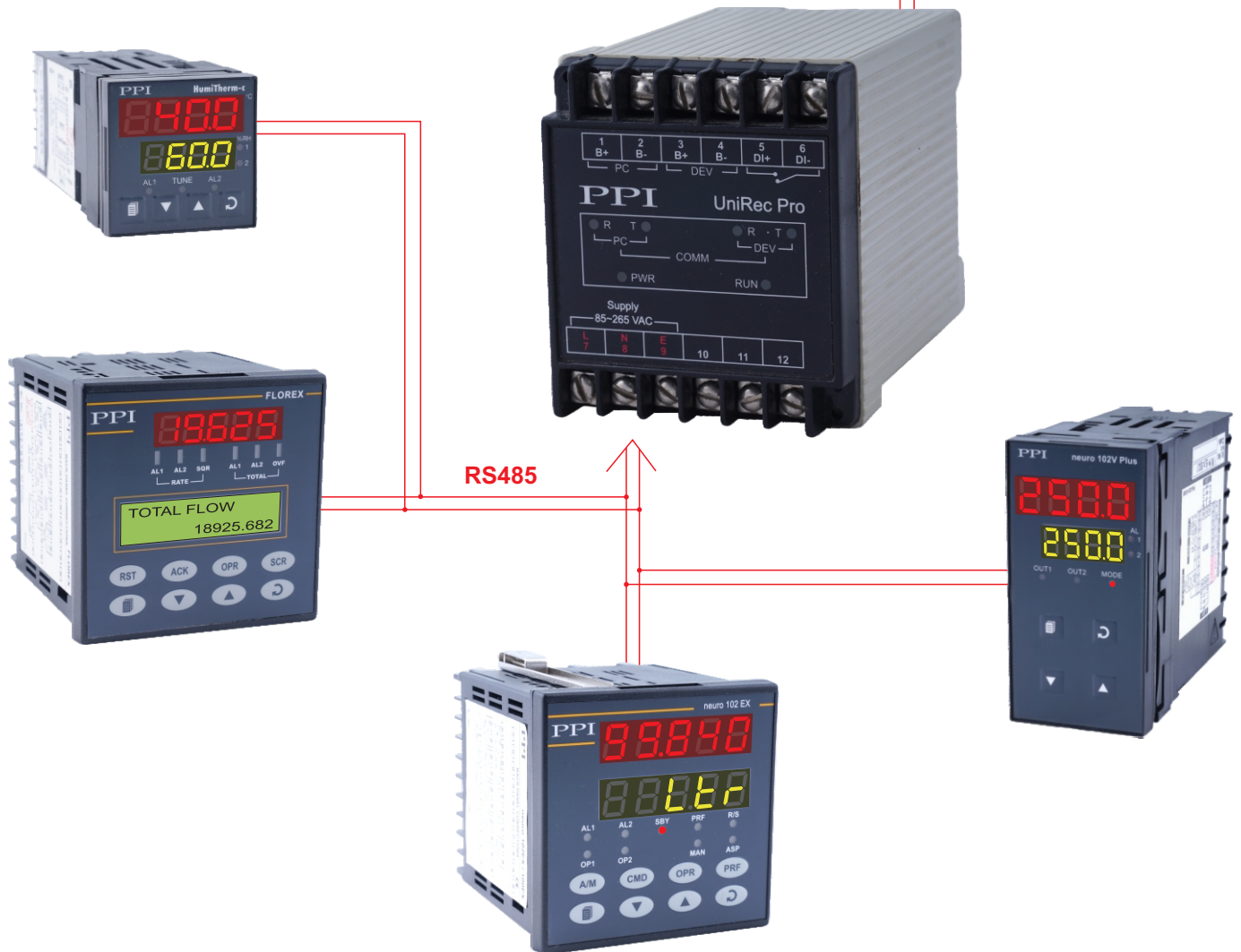


**Licence - Free
Data Logging
Software**



RS485 to USB Converter



Features

- Fetches & Records PV Data from a Range of PPI's Widely used Process Indicators & Controllers
- Supports Multiple Indicators / Controllers (Any Mix of Models)
- Periodic (User settable interval) Recording of PV and Alarm Status
- Huge Data Storage Capacity (2 GB Memory, Approx. 38,56,000 Records)
- DIN Standard Dimensions : 70(H) X 60(W) X 110(D), mm
- Accompanied with Windows Based PC Software for Record Transfer & Analysis with following Salient Features
 - ✓ Online Data Display in Tabular & Graphical Forms with Alarm Indications
 - ✓ Automatic Periodic Record Fetching from UniRec Pro
 - ✓ Manual & Auto Back-up Facility with Archiving
 - ✓ Data Log Report, Alarm Log Report & History Graph in PDF & Excel Formats

Indicators / Controllers Supported for Data Recording

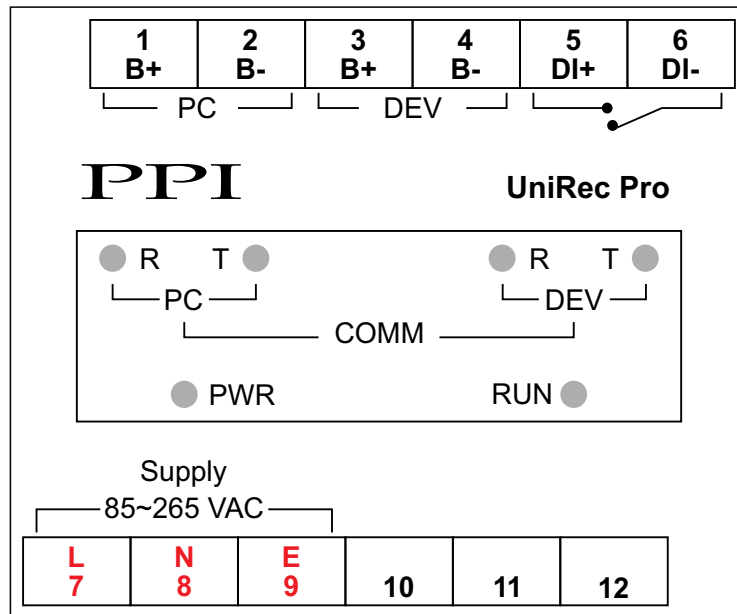
Device (Model Name)	Description
zenex	Versatile Self Tune PID Temperature Controller with Programmable Timer
zenex-ultra	Ultra Precision (0.01 °C) Self Tune PID Temperature Controller with Programmable Timer
Apex	Universal PID Temperature Controller with Ramp/Soak Profile
Clavex	Autoclave Controller
EPSILON	Universal PID Process Controller with Ramp / Soak Profile
Delta	2-in-1 Self Tune PID Temperature Controller
FLOREX	Flow Rate Indicator Cum Totaliser
neuro100	Universal Process Indicator
neuro100 Z	Enhanced Range Universal Process Indicator for Volume Indication
neuro100 EX	Enhanced Universal Process Indicator
neuro102	Universal Single Loop Process Controller
neuro102 Plus	Advanced Universal Single Loop Process Controller
neuro102 EX	Enhanced Universal Single Loop Process Controller
neuro104	Open Loop Motorized Valve Controller
neuro105	Programmable Profile Controller
HumiTherm-i	Smart 'Temperature + Humidity' Indicator
HumiTherm-iS	Advanced Temperature + Humidity Indicator with Control, Alarms & Retransmission
HumiTherm-c	Composite 'Temperature + Humidity' Self Tune PID Controller
HumiTherm-cS	Advanced Temperature + Humidity Programmable Controller with Alarms

Note : Contact factory for Indicators / Controllers not included in above list.

Specifications

Recording	
Recording Capacity	2 GB Flash Memory (Approx. 38,56,000 Records)
Recording Mode	Continuous, Batch
Recording Interval (User Settable)	Minimum : 1 Sec Maximum : 9000 Sec
Device Interface	
Serial Port	RS485, 2-wire, Half Duplex, Start-Stop Synchronized
Protocol	Modbus RTU
Baud Rate	Fixed : 9600
Parity	Fixed : Even
Device ID	1 to 19
Max. Distance	1200 Metres
PC Interface	
Serial Port	RS485, 2-wire, Half Duplex, Start-Stop Synchronized
Protocol	Modbus RTU
Baud Rate	Fixed : 9600
Parity	Fixed : Even
Device ID	Settable : 1 to 127 (Through PC Software using Broad-cast Message)
Max. Units per Loop	31
Max. Distance	1200 Metres
Power Supply	
Type	Switch Mode (SMPS)
Supply Voltage	85~264 VAC, 50/60 Hz, Single Phase
Consumption	1VA Max
Physical	
Mounting	DIN Rail
Overall Dimensions	70 (H) X 60 (W) X 110 (D)
Terminals	Screw Type
Weight	100 gm, Appx.
Environmental	
Operating Ambient	0~55°C & 5~90%RH Non-condensing
Storage Temperature	-10 to +70 °C
EMC Standards	EN50081-2 & EN 50082-2 Generic Stds for Industrial Environment
Safety Standards	Meets EN61010, Installation Catagory II
Atmospheres	Not Suitable for use in Corrosive or Explosive Atmospheres. The Panel in which the Instrument is Mounted must be free of Electrically Conductive Pollution.

Back Panel Terminations



PC Interface with 21 CFR Compliant Software

Supported Operating Systems (OS)	<ul style="list-style-type: none"> • Windows Vista • 32 bit / 64 bit Windows 8 • Windows 7 • 32 bit / 64 bit Pentium Dual Core
Minimum PC Configuration Requirements	<ul style="list-style-type: none"> • 2.8 GHz Clock Speed • 40 GB Hard Disk • 2 GB RAM
PC Software Features (USFDA 21 CFR Part 11 Compliant)	<ul style="list-style-type: none"> • Auto Start-up on PC Power-up • Online Display of Process Values & Stored Records in Graphical & Tabular Forms with Alarm Indications • Automatic Periodic Downloading of Records Stored in Controller • Access Control According to Authority Level • User Actions with Signing & Authorization • Automatic Password Expiry • Manual & Auto Back-up Facility with Archiving • Data Log Reports with User Configurable Title, Footer & Header • Data Log Report, Alarm Log Report, History Graph & Audit Trail Report in PDF & EXCEL formats • Audit Trail History of Critical Events & User Actions

